





Located in the north west corner of the historic city of Cambridge, Churchill College sits in an extensive, tranquil parkland setting close to many of the university's famous scientific institutions.

The range of rooms includes a theatre equipped for multi media presentations, dedicated exhibition space, a number of small meeting rooms, a large dining hall and acres of grassland used for accommodating marquees, barbeques and outdoor activities. A selection of these rooms is illustrated in this brochure. A more comprehensive guide can be found on the website

## The Jock Colville Hall

Capacity: 100

A dramatic purpose built exhibition space, flooded with light from the afternoon sun. The grand bronze entrance doors lead into a tranquil flexible space which can be used for informal gatherings.





## Wolfson Hall

Capacity: 300

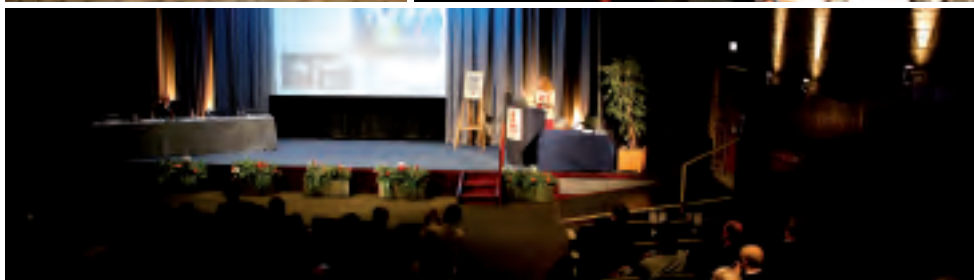
An air-conditioned theatre with tiered seating for 236 (and additional temporary seating for 64).

A full depth proscenium stage offers front projection along with theatrical lighting and a surround sound system. The theatre is complemented with a fully professional in-house AV service, which includes digital recording for web and podcasting, video conferencing and help in demystifying the options presented by new media.

## Wolfson Hall Foyer

The lobby of the Wolfson Hall provides an informal lounge area for event delegates.

This area offers a business centre for conferences with PC terminals with free broadband internet access, tables for those wishing to connect their lap tops to the free WIFI service, and a dedicated conference office with printing, copying and facsimile facilities on hand.





## The Dining Hall

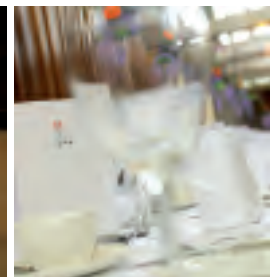
Capacity: 430

The largest dining hall in Cambridge, this voluminous flexible space is a blank canvas which can be used for traditional college dining, themed events with sets and staging or dining with dancing.

## The Cockroft Room

Capacity: 30

Rimu panelled walls form a subtle backdrop to a number of drawings and paintings from the College's collection. This intimate space overlooking the Master's Lawn combines two interlinked rooms which can be used for small meetings, convivial dinner parties or a combination of both.





## The Tizard Room

Capacity: 35

On the first floor of the main College building, with views of the College lawn to one aspect and the extensive playing fields to the other, this light, bright space is equipped with an AV wall to ensure that presentations are seamless and trouble free.

## The Bevin Room

Capacity: 40

Situated off the Wolfson Hall foyer, this room can be used in conjunction with the theatre as a breakout space or in its own right as a meeting room. The wall of windows with inspiring views across the grounds gives a sense of tranquillity, whilst plentiful daylight helps to illuminate the room which is equipped with an 'AV wall' to facilitate seamless presentations as well as free WIFI access.





## The Fellows' Dining Room

Capacity: 75

A changing display of contemporary artworks adorn the walls of this formal dining room. The juxtaposition of traditional and contemporary culture coupled with panoramic views across the College grounds, give this room a vibrant ambience, making every event a memorable one.

## The bedrooms

Capacity: 350

All bedrooms are located within interlinked courtyards around the College site.

The light, generously proportioned rooms combine the functional needs of a business traveller, including a spacious desk and free broadband internet access, with home comforts such as a hospitality tray, toiletries and slippers.



## Churchill Conferences Limited

Storey's Way  
Cambridge CB3 0DS

T. 01223 336233  
F. 01223 336174

[enquiries@churchillconferences.co.uk](mailto:enquiries@churchillconferences.co.uk)  
[www.churchillconferences.co.uk](http://www.churchillconferences.co.uk)